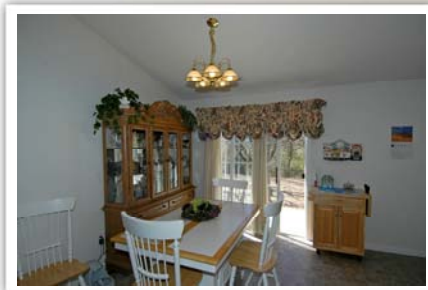
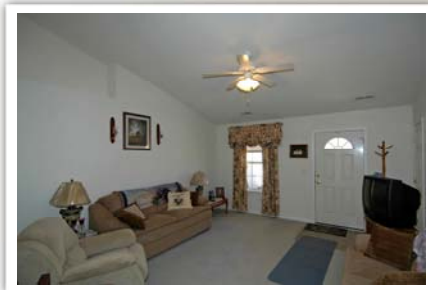


Split Bedroom Floor Plan



407 SUSSEX WAY

\$124,900

3 BEDROOMS / 2 BATHS

Elizabeth
Gray-Carr Team
- YOUR REAL ESTATE PROFESSIONALS -



Outstanding almost new home in the well established Stonehaven Subdivision. This home, with a split bedroom floor plan, enjoys a spacious family room with a vaulted ceiling that opens to the dining area and kitchen. The dining area opens to the patio and backyard with an above ground pool, great for relaxing and enjoying family and friends.

- MLS #20105882
- 1,384± Square Feet
- Home Built in 2004
- .78± Acre Lot
- TMS # 094-12-04-020
- Centerville/Lakeside/Westside Schools
- Living Room Size: 16 x 14
- Kitchen/Dining Size: 18 x 11
- Master Bedroom Size: 15 x 13
- Bedroom 2 Size: 13 x 10
- Bedroom 3 Size: 12 x 11
- Heat Pump / Central Air
- Taxes: \$486.35
- 2 Car attached garage
- Vaulted ceiling
- Split bedroom floor plan
- Private master bath with separate shower and garden tub
- Spacious kitchen with ample cabinets and countertop space
- Above ground pool



CALL DIRECT
(864) 225-2503

www.CallElizabeth.com
MLS Search, Virtual Tours, Home Details, and More!